



Donald's



The Official Uniform Store Since 1952

Donald's St. Paul - 972 Payne Avenue - St. Paul, MN 55130 - Phone: 651-776-2723 Ext. 0

Donald's WEST - 4 Shady Oak Road - Hopkins, MN 55343 - Phone: 651-776-2723 Ext. 2

[Shop Online @ www.donaldsuniform.com](http://www.donaldsuniform.com)



School #1710

Nasha Shkola Charter School 2024 Uniform Price List

Jumpers & Skirts

| Jumpers | Regular | Half Sizes |
|---------|---------|------------|
|---------|---------|------------|

Grades K-4

| | | |
|----------------------------|---------|---------|
| #94 Drop Waist - Plaid: 68 | \$51.00 | \$53.25 |
|----------------------------|---------|---------|

Traditional Waist Skirts

| | Regular | Half Sizes | Junior |
|--|---------|------------|--------|
|--|---------|------------|--------|

Grades 5-8

| | | | |
|------------------------------|---------|---------|---------|
| #1034 Box Pleats - Plaid: 68 | \$48.50 | \$51.25 | \$53.25 |
|------------------------------|---------|---------|---------|

Leggings & Bike Shorts

Girls' Knit Leggings & Bike Shorts

| <u>Navy Blue</u> | Youth XXS-XL | Junior S-XL |
|------------------|--------------|-------------|
| Leggings | \$22.50 | \$27.00 |
| Bike Shorts | \$15.75 | \$19.75 |

Accessories

Girls' Hair Accessories #68 Plaid

See Website for Pricing



Doll Size Uniforms

| | |
|-------------------------|---------|
| Plaid Jumper and Blouse | \$30.75 |
|-------------------------|---------|

Girls' Socks

| <u>White or Navy</u> | S - M - L - XL |
|--|----------------|
| Trimfit Cotton/Spandex Knee High Socks | Each \$6.00 |
| A+ Knee High Socks - Cable Pattern | 3-Pack \$19.75 |
| A+ Knee High Socks - Opaque | 3-Pack \$17.65 |
| A+ Crew Socks | 3-Pack \$18.00 |
| Plaid Ruffle Anklet - Plaid #68 | Each \$9.75 |

Tights

White or Navy

| | |
|-----------------------------------|---------|
| Trimfit - Women's Tights - Opaque | \$12.00 |
| Cotton | \$13.75 |

Belts

| | |
|---|---------|
| Adjustable Stretch Belt - Heart or Plain Buckle | \$11.00 |
|---|---------|

Boys' Pants

| Boys' Twill Pants | Reg/Slim Size 3-7 | Reg/Slim Size 8-16 | Husky 25-38 | Men's 30-48 |
|-------------------|----------------------|-----------------------|----------------|----------------|
|-------------------|----------------------|-----------------------|----------------|----------------|

Navy Blue

*3-16 and Husky sizes have Double Knees'

Flat Front Styles

| | | | | |
|---|---------|---------|---------|---------|
| A+ #7750 Relaxed Fit, <u>Adj. Waist</u> | \$27.00 | \$30.00 | \$33.00 | - |
| A+ #7021 Relaxed Fit, Flat Back | - | - | - | \$37.00 |
| #1368/7573 Elastic Back - <u>Navy</u> | \$31.75 | \$31.75 | \$36.75 | - |
| A+ #7893/7894 Modern Fit Twill | \$29.00 | \$31.00 | \$35.00 | \$37.00 |
| Unisex All-Around Elastic Waist Pants | \$26.00 | | | |

Boys' Shorts

| Boys' Twill Shorts | Reg/Slim Size 3-7 | Reg/Slim Size 8-16 | Husky 25-38 | Men's 30-48 |
|--------------------|----------------------|-----------------------|----------------|----------------|
|--------------------|----------------------|-----------------------|----------------|----------------|

Navy Blue

Flat Front Styles

| | | | | |
|--|---------|---------|---------|---------|
| A+ #7099/7031 Relaxed Fit | \$24.00 | \$27.00 | \$30.00 | \$33.00 |
| A+ #7897/7898 Modern Fit | \$26.00 | \$28.00 | \$32.50 | \$35.00 |
| #1349/7574 Elastic Back - <u>Navy</u> | \$24.00 | \$27.00 | \$30.00 | - |
| Unisex All-Around Elastic Waist Shorts | \$23.00 | | | |

Accessories

| Belts | 20-42" | one size |
|--|---------|----------|
| 1 1/4" Dress Belt, Oil Tanned Brass Buckle | \$19.75 | fits all |
| Adjustable Stretch Belt - Heart or Magnet Buckle | | \$11.00 |

Boys' Socks

Navy Or White

| | |
|---------------------|-----------|
| A+ Cotton Crew # 65 | 3/\$18.00 |
|---------------------|-----------|





Donald's

The Official Uniform Store Since 1952

Donald's St. Paul - 972 Payne Avenue - St. Paul, MN 55130 - Phone: 651-776-2723 Ext. 0

Donald's WEST - 4 Shady Oak Road - Hopkins, MN 55343 - Phone: 651-776-2723 Ext. 2

Shop Online @ www.donaldsuniform.com



School #1710

Nasha Shkola Charter School 2024 Uniform Price List

Sweaters

V-Neck Cardigan with Pockets

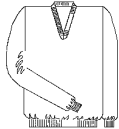
Navy Blue with Logo



| Youth | Adult S-XL | 2XL-3XL |
|---------|------------|---------|
| \$44.75 | \$49.75 | \$49.75 |

V-Neck Pullover Sweater

Navy Blue with Logo



| Youth | Adult S-XL | 2XL-3XL |
|---------|------------|---------|
| \$41.25 | \$45.25 | \$45.05 |

Girls' Crew Neck Cardigan Sweater

Navy Blue with Logo



| Youth | Adult S-XL | 2XL-3XL |
|---------|------------|---------|
| \$44.00 | \$46.50 | \$46.50 |

Sweatshirts

Crew Neck Sweatshirt - Russell Athletic

Navy Blue with Logo

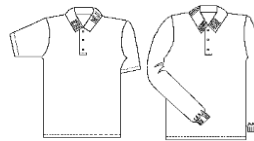


| Youth | Adult S-XL | 2XL |
|---------|------------|---------|
| \$29.25 | \$32.25 | \$32.25 |

Knit Polo Shirts

Unisex Smooth Interlock Knit Polo Shirts

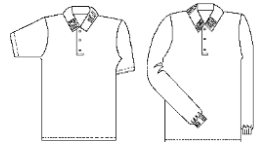
White or Red with Logo



| | Short Sleeve | Long Sleeve |
|-------------------------|--------------|-------------|
| Youth XXS-XL | \$27.50 | \$30.00 |
| Adult XS-3XL | \$30.50 | \$32.00 |
| <i>Prices with Logo</i> | | |

Unisex Smooth Interlock Knit Polo Shirts

White or Red - Girls Grades K-4 - Worn Under Jumper



| | Short Sleeve | Long Sleeve |
|----------------------------|--------------|-------------|
| Youth XXS-XL | \$22.25 | \$24.75 |
| Adult XS-3XL | \$25.25 | \$26.75 |
| <i>Prices without Logo</i> | | |

Girls' Peter Pan Blouses

Grades K-4 - White - Worn Under Jumper Only



| | Short Sleeve | Long Sleeve |
|----------------|--------------|-------------|
| Youth Sizes | \$20.00 | \$21.00 |
| Women's XS-3XL | \$22.00 | \$24.50 |

**Order Online and Pick Up Your Order at
the Donald's Location of Your Choice!**

No Shipping Charge!

Select the "Call When Ready - In-Store Pickup"
Option at Checkout. Available for Both Locations!

www.donaldsuniform.com