



Donald's

The Official Uniform Store Since 1952

Donald's St. Paul - 972 Payne Avenue - St. Paul, MN 55130 - Phone: 651-776-2723 Ext. 0

Donald's WEST - 4 Shady Oak Road - Hopkins, MN 55343 - Phone: 651-776-2723 Ext. 2

Shop Online @ www.donaldsuniform.com



St. Mary's Catholic School - Tomahawk, WI
2024 Uniform Price List

Girls' Pants & Shorts

Table with 5 columns: Item, Reg, Reg/Slim, Juniors, Half. Item: Girls' Twill Pants, Sizes: 3-6X, 7-16, 3-15, Sizes.

Khaki or Navy Blue

Flat Front Styles

Table with 5 columns: Item, Reg, Reg/Slim, Juniors, Half. Items: #7895/7896 Girls Modern Fit Pants with Stretch, #2526 Slender Fit, Skinny Leg with Stretch.

Girls' Twill Shorts

Table with 5 columns: Item, Reg, Reg/Slim, Juniors, Half. Item: Girls' Twill Shorts, Sizes: 4-6X, 7-16, 3-15, Sizes.

Khaki or Navy Blue

Table with 5 columns: Item, Reg, Reg/Slim, Juniors, Half. Items: #7904/7910 Modern Fit Flat Front, #7876 Modern Fit Flat Front.

Jumpers, Skirts & Skorts

Table with 4 columns: Item, Regular, Half. Items: #7102 Split Top, Knife Pleats Plaid: 76, #1194 Drop Waist, Box Pleats, Plaid: 76.

Table with 4 columns: Item, Reg 3-16, Half Sizes. Item: #2762 Drop Waist Pleated Jumper w/ Button Tabs.

Table with 4 columns: Item, Regular, Half, Junior. Items: #1034 Box Pleats - Colors: Khaki-Navy, #1034 Plaid: 76 Plaid.

Table with 4 columns: Item, Reg, 7H-16H, Jr 3-21. Items: #2653 K-12 Pleated Scooter Skort-Front & Back Flap, #UD350 Skort - Poly/Cotton - Plaid: 76.

Accessories

Table with 2 columns: Item, Price. Item: Navy, White Tights, Trimfit- Women's Tights- Opaque, Cotton.

Girls' Hair Accessories

See Website for Pricing



Doll Size Uniforms

Table with 2 columns: Item, Price. Item: Plaid Jumper and Blouse, \$30.75.

Girls' Knit Leggings & Bike Shorts

Table with 3 columns: Item, Youth XXS-XL, Junior S-XL. Items: Navy Blue or Black Leggings #4007/4010, Bike Shorts #4009.

Boys' Pants & Shorts

Table with 6 columns: Item, Reg/Slim Size 3-7, Reg/Slim Size 8-16, Husky 25-38, Men's 27-30, Men's 30-48. Item: Boys' Twill Pants.

Khaki or Navy Blue

3-16 and Husky sizes have Double Knees

Flat Front Styles

Table with 6 columns: Item, Reg/Slim Size 3-7, Reg/Slim Size 8-16, Husky 25-38, Men's 27-30, Men's 30-48. Items: #7750 Relaxed Fit, Adj. Waist, #7021 Relaxed Fit, Flat Back, #1368/7573 Elastic Back - Navy, #7893/7894 Modern Fit Twill, #7014/7899 - Microfiber Pants, Unisex All-Around Elastic Waist Pants.

Boys' Twill Shorts

Table with 6 columns: Item, Reg/Slim Size 3-7, Reg/Slim Size 8-16, Husky 25-38, Men's 27-30, Men's 30-38. Item: Boys' Twill Shorts.

Khaki or Navy Blue

Flat Front Styles

Table with 6 columns: Item, Reg/Slim Size 3-7, Reg/Slim Size 8-16, Husky 25-38, Men's 27-30, Men's 30-38. Items: #7099/7031 Relaxed Fit, #7897/7898 Modern Fit, #1349/7574 Elastic Back - Navy, #7912/7913 Microfiber Shorts, Unisex All-Around Elastic Waist Shorts.

Belts

Table with 3 columns: Item, 20-42", 44-48". Items: 1 1/4" Leather Dress Belt, Adjustable Stretch Belt - Magnet Closure or Heart Buckle, Adjustable Plaid Belt - Heart Buckle.

Boys' Socks

Table with 2 columns: Item, Price. Item: Navy, White A+ Crew Socks, 3/\$18.00.

Girls' Socks

Table with 3 columns: Item, S-M-L, Price. Items: Navy, White Trimfit Cotton/Spandex Knee High Socks, A+ Knee High Socks - Cable Pattern, A+ Knee High Socks - Opaque, A+ Crew Socks, Plaid Ruffle Anklelet - Plaid #76.



Donald's

The Official Uniform Store Since 1952

Donald's St. Paul - 972 Payne Avenue - St. Paul, MN 55130 - Phone: 651-776-2723 Ext. 0

Donald's WEST - 4 Shady Oak Road - Hopkins, MN 55343 - Phone: 651-776-2723 Ext. 2

Shop Online @ www.donaldsuniform.com



St. Mary's Catholic School - Tomahawk, WI 2024 Uniform Price List

Sweaters

V-Neck Cardigan with Pockets

Navy Blue or Red with Optional Logo



Youth	Adult S-XL	2XL-3XL
\$44.75	\$49.75	\$49.75

Girls' Crew Neck Cardigan Sweater

Navy Blue or Red with Optional Logo

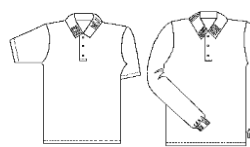


Youth	Adult S-XL	2XL-3XL
\$44.00	\$46.50	\$46.50

Knit Polo Shirts

Unisex Smooth Interlock Knit Polo Shirts

White, Red, Navy or Light Blue with Optional Logo



	Short Sleeve	Long Sleeve
Youth XXS-XL	\$28.00	\$30.00
Adult XS-XL	\$31.00	\$32.00
Adult 2XL-3XL	\$31.00	\$32.00

Girl Fit Smooth Interlock Knit Polo Shirt

White, Red, Navy or Light Blue with Optional Logo



	Short Sleeve
Youth XS-XL	\$28.00
Junior S-XL	\$31.00
Junior 2XL	\$31.00

Performance Sweatshirts and Jackets

1/2 Zip Performance Fleece Sweatshirt #6133

Navy Blue or Red with Mandatory Logo



Youth	Adult S-XL	2XL-3XL
\$38.50	\$44.50	\$44.50

1/2 Zip Performance Jacket #1025

Navy Blue or Red with Mandatory Logo



Youth	Adult S-XL	2XL-3XL
\$38.50	\$44.50	\$44.50

Full Zip Performance Jacket #1026

Navy Blue or Red with Mandatory Logo



Youth	Adult S-XL	2XL-3XL
\$44.00	\$50.00	\$50.00

New Performance Knit Shirts

100% Polyester - Moisture Wicking

White, Red, Navy or Light Blue with Optional Logo



	Short Sleeve
Youth XS-XL	\$30.00
Adult S-XL	\$33.00
Adult XXL-XXXL	\$33.00

Girls' Peter Pan Blouses

White - Worn Under Jumper



	Short Sleeve	Long Sleeve
Youth Sizes	\$20.00	\$21.00
Women's XS-3XL	\$22.00	\$24.50

