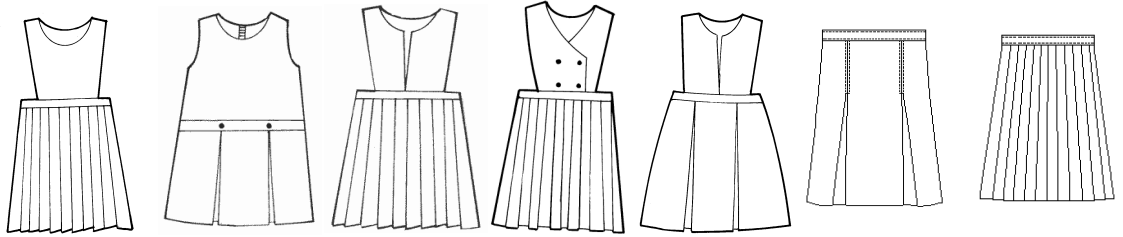


# Girls Jumper & Skirt Size Chart



Jumpers & Skirts											
<b>REGULAR SIZES</b>	<b>3</b>	<b>4</b>	<b>5</b>	<b>6</b>	<b>6X</b>	<b>7</b>	<b>8</b>	<b>10</b>	<b>12</b>	<b>14</b>	<b>16</b>
<b>WAIST</b>	20	21	22	23	24	24	24.5	25.5	26.5	28	29.5
<b>HIPS</b>	26.5	27.5	28.5	29.5	30.5	30.5	31.5	32.5	33.5	35	36.5
<b>SKIRT LENGTH</b>	12	13	14	15	16	17	18.5	19.5	20	20.5	21
<b>NECK TO WAIST</b>	9	9.5	10	10.5	11	11.5	12	13	13.5	14.5	15.5
<b>FULL LENGTH</b>	21	22.5	24	25.5	27	28.5	30.5	32.5	33.5	35.5	36.5
<b>BUST</b>	24	25	26	27	27.5	28	29	30	31.5	33	34
Jumpers & Skirts											
<b>HALF SIZES</b>	<b>7.5</b>	<b>8.5</b>	<b>10.5</b>	<b>12.5</b>	<b>14.5</b>	<b>16.5</b>	<b>18.5</b>				
<b>WAIST</b>	28.5	29.5	30.5	32	33.5	35	36.5				
<b>HIPS</b>	35	36	37	38.5	40	41.5	43				
<b>SKIRT LENGTH</b>	17	18.5	19.5	20	20.5	21	21.5				
<b>NECK TO WAIST</b>	11.5	12	13	13.5	14.5	15	15.5				
<b>FULL LENGTH</b>	28.5	30.5	32.5	33.5	35	36	37				
<b>BUST</b>	32	33	34	35.5	37	38.5	40				
Skirts Only											
<b>TEEN REGULAR SIZES</b>	<b>2 T</b>	<b>4 T</b>	<b>6 T</b>	<b>8 T</b>	<b>10 T</b>	<b>12 T</b>	<b>14 T</b>	<b>16 T</b>	<b>18 T</b>	<b>20 T</b>	
<b>WAIST</b>	21	22	23	24	25	26	27	29	31	33	
<b>HIPS</b>	31	32	33	34	35.5	37	38.5	40	42	44	
<b>SKIRT LENGTH</b>	22	22	22	22	22	22	22	22	22	22	
Skirts Only											
<b>TEEN HALF SIZES</b>	<b>8T.5</b>	<b>10T.5</b>	<b>12T.5</b>	<b>14T.5</b>	<b>16T.5</b>	<b>18T.5</b>	<b>20T.5</b>				
<b>WAIST</b>	31.5	33	34.5	36	37.5	39.5	41.5				
<b>HIPS</b>	42.5	44	45.5	47	48.5	50	51.5				
<b>SKIRT LENGTH</b>	25	25	25	25	25	25	25				